

Challa Chlorides Pvt. Ltd.



Challa Chlorides Pvt. Ltd.

Solapur, Maharashtra



Registered Address: 508, Emerald , Amrutha Hills, Panjagutta, Hyderabad -500082



+91 9849428999; 9391499199.



challachlorides@hotmail.com

challachlorides@gmail.com

<http://www.challachlorides.com>

INTRODUCTION

- Challa Chlorides has State-of-the-art manufacturing facility at Plot F-2, MIDC, Chincholi, Solapur, Maharashtra-413255
- We are the manufacturer of API, API intermediates and specialty chemicals.
- Business Model: Developing and manufacturing challenging Active Pharmaceutical Ingredients and high quality fine chemicals and spread our business worldwide.

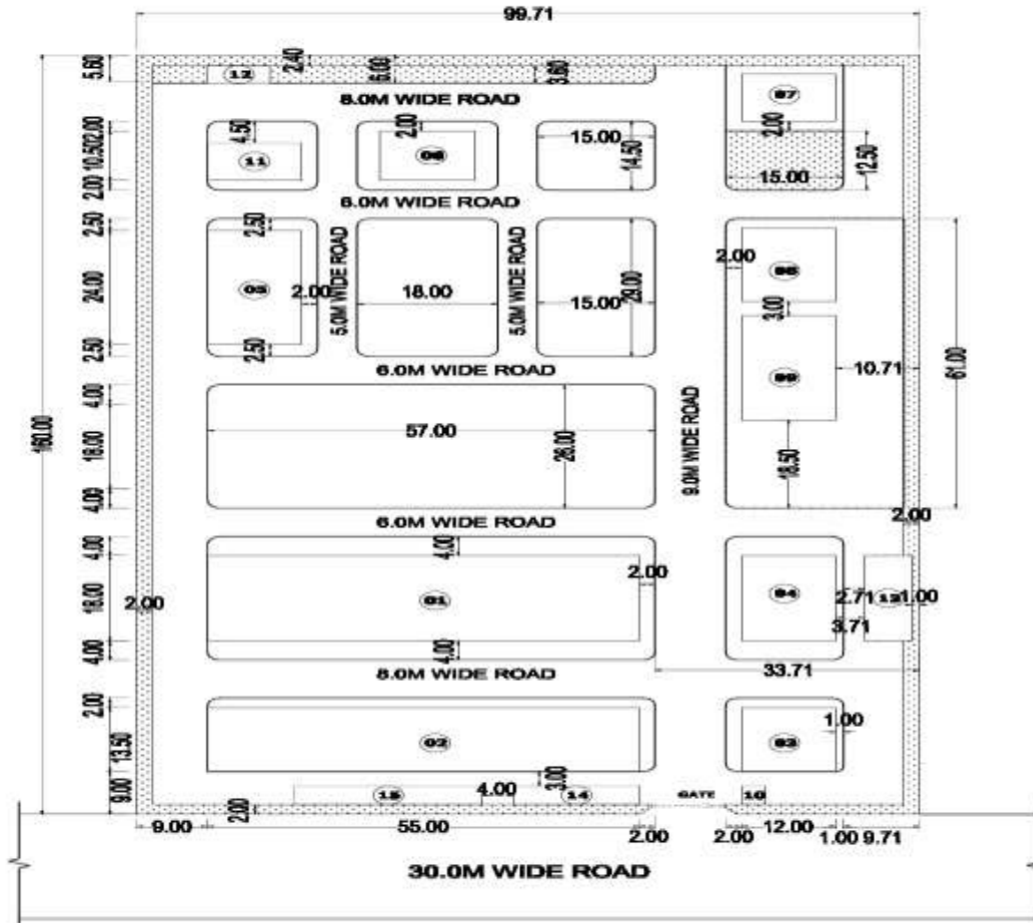
VISION

- **A person with great dreams can achieve great things**
- At Challa Chlorides, our vision is to emerge as a globally renowned pharmaceutical enterprise by the acceptance & confidence of quality of products with the highest level of operational excellence in all range.
- Challa Chlorides vision is to make each and every supplier successful. We accomplish this by adding value to our customers through our products, and service-oriented approach.
- Our customers depend on radiant to deliver products that save and improve lives. radiant is committed to reliably delivering high quality products to our customers on time, every time.
- Our goal is to attain growth by partnering with our customers and solving their production-related challenges through our quality production.

S.No	CHEMICAL NAME	CAS NUMBER	API NAME	Status
1	3-(4-phenoxyphenyl)-1H-pyrazolo[3,4-d]pyrimidin-4-amine	330786-24-8	Ibrutinib	Lab
2	4-Phenoxybenzoic acid	2215-77-2	Ibrutinib	Lab
3	2-(2-butyl-4-methyl-6-oxo-1,6-dihydropyrimidin-5-yl)-N,N-dimethylacetamide	1315478-13-7	Fimasartan	Lab
4	5-Chlorobenzoxazole	17200-29-2	Suvorexant	Lab
5	Thiophene 2-carboxaldehyde	98-03-3	Eprosartan, Ethaboxam, Teniposide etc.	Lab
6	2-Acetyl Thiophene	88-15-3	Duloxetine	
7	Cis Bromo Benzoate (cis-[2-Bromomethyl-2-(2,4-dichlorophenyl)-1,3-dioxolan-4-yl]methyl Benzoate)	61397-56-6	Ketoconazole/ Itraconazole	Commercial
8	5-Cyanophthalide	82104-74-3	Citalopram	Commercial
9	1-Phenylcyclopentanecarbonitrile	77-57-6	Caramiphen	Commercial
10	1-Phenylcyclopentanecarboxylic acid	77-55-4	Caramiphen	Commercial
11	4-Bromobenzoic acid	586-76-5	Multiple	Lab
12	4-(Bromomethyl)benzonitrile	17201-43-3	Imatinib	Lab
13	3-Carbamoymethyl-5-methylhexanoic Acid	181289-15-6	Pregabalin	Lab
14	5-Bromonicotinic Acid	20826-04-4	Nicergoline	Lab
15	4-Chloro-N-methylpyridine-2-carboxamide	220000-87-3	Sorafenib	Lab
16	4-(4-Aminophenoxy)-N-methylpicolinamide	284462-37-9	Sorafenib	Lab
17	4-(4-Amino-3-fluorophenoxy)-N-methylpyridine-2-carboxamide	757251-39-1	Regorafenib	
18	Di Benzoyl-D-Tartaric Acid Anhydrous	17026-42-5	Multiple	
19	Di Benzoyl-D-Tartaric Acid Monohydrate	80822-15-7	Multiple	
20	Di Benzoyl-L-Tartaric Acid Anhydrous	2743-38-6	Multiple	
21	Di Benzoyl-L-Tartaric Acid Monohydrate	62708-56-9	Multiple	
22	Metachloro Anisole.	2845-89-8	Tramadol.HCl and Tapentadol.HCl	
23	Tris(4-hydroxyphenyl)ethane	27955-94-8	Multiple	
24	Methyl 2-oxocyclopentanecarboxylate	10472-24-9	Loxoprofen sodium	

SITE LAYOUT

SITE LAYOUT OF PROPOSED FACTORY BUILDINGS BELONGS TO M/S CHALLA CHLORIDES PVT.LTD. SITUATED IN PLOT NO. F2 OF CHINCHOLI, M.I.D.C., SOLAPUR.



REFERENCE

SNo.	DESCRIPTION	SIZE IN METRES	AREA (SQ.MT)
01	PRODUCTION BLOCK-I	55.00 X 16.00	880.00
02	WARE HOUSE	55.00 X 13.50	742.50
03	BOILER HOUSE	12.00 X 13.50	162.00
04	D.S.SET & POWER HOUSE	12.00 X 16.00	192.00
05	UTILITIES BLOCK	12.00 X 24.00	288.00
06	EFFLUENT STORAGE TANK ABOVE G.L.	12.00 X 10.50	126.00
07	UNDERGROUND WATER TANK	12.00 X 10.00	120.00
08	OVERGROUND CHEMICALS TANK YARD	12.00 X 15.50	186.00
09	UNDERGROUND SOLVENTS TANK YARD	12.00 X 22.00	264.00
10	SECURITY ROOM	3.00 X 4.00	12.00
11	MULTIEFFECT EVAPORATOR SYSTEM	12.00 X 6.00	72.00
12	TOILET BLOCK	6.00 X 3.00	18.00
13	TRANSFORMER YARD	6.00 X 18.00	108.00
14	CHANGE CUM REST ROOMS	16.00 X 4.00	64.00
15	CYCLE SHED & CAR PARKING	24.00 X 4.00	96.00

TOTAL BUILTUP AREA = 3492.70
(OR) 21.67 %

OPEN AREAS:-		
1. GREENARY	: 1406.00 SQ.MTS	8.81 %
2. ROADS AREA	: 4245.00 SQ.MTS	26.54 %
3. OPEN AREA	: 6945.20 SQ.MTS	43.79 %

TOTAL PLOT AREA = 10086.90 SQ.MT (OR)
1.009 HECTRES OR 4.9 ACERS

SL.NO	DRG.NO	REV. NO	DATE

CLIENT:
M/s. CHALLA CHLORIDES PVT. LTD.
CHINCHOLI, M.I.D.C., SOLAPUR.

TITLE: **SITE LAYOUT**

EXISTING :	PROPOSED :
—	—



SCALE: 1:400 DRG NO: LC/CHALLA/ARCH/SL/01 DATE: 07-12-2012

FIRM:
M/S LEEV CONSULTANTS
179/14 R.No.24,
V.V.Nagar Colony,
Kukatpally,
HYDERABAD-500072.

PREPARED BY: JYOTHI T. SACS
DESIGNED & CHECKED BY:

OWNER'S SIGNATURE

V.V. RAO M. Tech. B.E.
M.B.E. P.A.M.
GROUP MEMBER REGISTERED
ARCHITECT (REGD) IN M

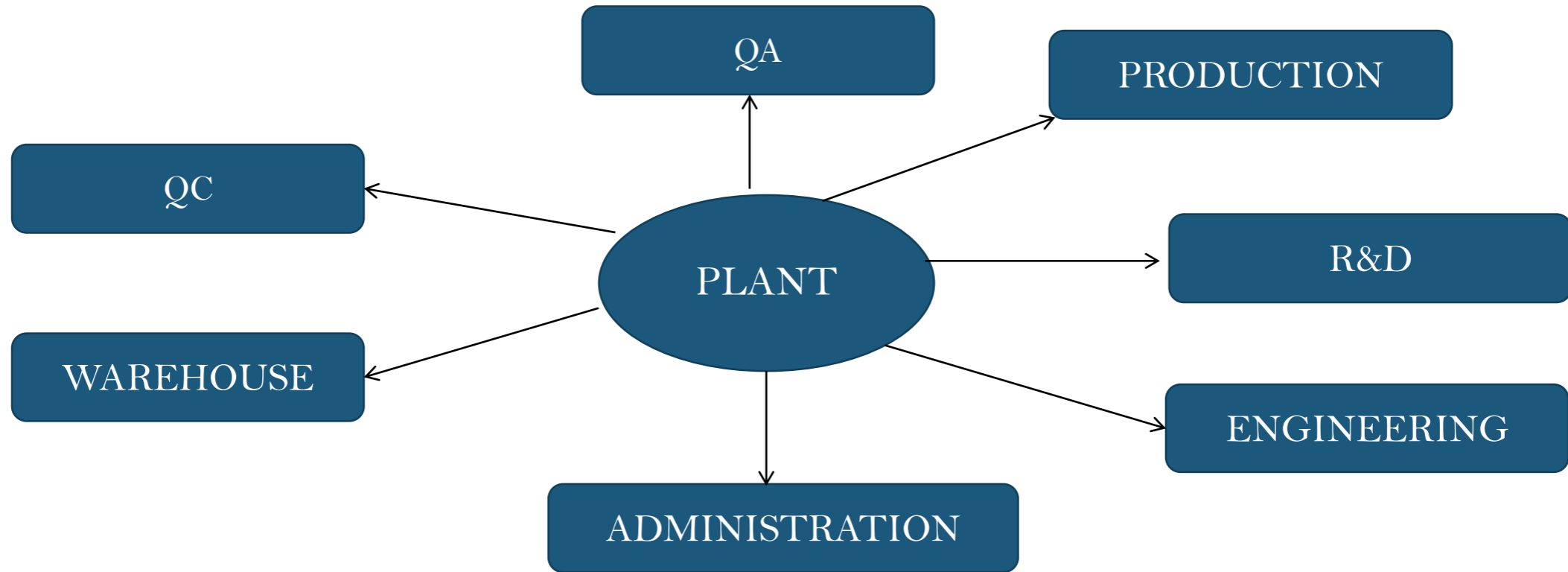
APPROVED BY

SITE PLAN

SECTION	AREA Square Feet
Production block	21500.0
Utility	3100.0
ETP and MEE	2400.0
Boiler	4000.0
R&D	1245.0
QC	2050.0
QA	900.0
Admin	4200.0
Warehouse	12000.0
Engineering Stores	4000.0

OUR FACILITY

State-of-the-art manufacturing facility at



PRODUCTION FACILITY

Stand alone GMP suites for large volume and small volume Intermediates.

- Manufacturing volumes ranging from 0.1KL to 6300 KL at present.
- Total reactor volume 108.0 KL
- 2 Production block are ready for production.
- SSRs, GLR, Glass assemblies, Centrifuges
- TD, Sifter, Miller
- filters

PRODUCTION EQUIPMENT DETAILS

Equipment	MOC	Capacity	Agitator Type
Reactor	SS-316	54.0	Anchor
Reactor	MSGGL	25.2	Anchor
Reactor	MSGGL	25.2	Propeller
Reactor	SS-316	3.0	Propeller
UFLC (HPLC)	Shimadzu	Auto Sampler	Prominence
GC	Shimadzu	Auto Injector	GC-2025
Digital Balance	Shimadzu	0.1 to 220 gms.	ATX 224
KF Apparatus.	Polman	Digital	Microcontroller based
Glass setup	All Glass	2.0 Ltrs	Stirrer
Glass setup	All Glass	3.0 Ltrs	Stirrer

PRODUCTION EQUIPMENT DETAILS

Equipment Name	MOC	Capacity
Centrifuge	SS-316	07 Nos@48"
Centrifuge	Halar lined	NIL
Tray Drier	SS-316	3*96 Trays
Tray Drier	SS-316	1*48 Trays
Nutsche filter	SS-316	1.0 KL-PP FRP
Sparkler filter	SS-316	50 Lts
Candy filter	SS-316	10 Lts
Micron filter	SS-316	NIL
Miller	SS-316	200 Kg/Hr.
Sifter	SS-316	30" Dia

Infrastructure / Services

Service	Capacity
Boiler	2.0 MT/Hour
Chilled Brine	40 Tr.
Cooling Water	200 & 100 Tr.
ROW water generation	NIL
Nitrogen Generation	Cylinders
Raw Water Storage	3.0 Lakhs Ltrs.
Fire Hydrant Water Storage	300 KL
Wastewater Collection	100 KL
Electrical Installation	315 KVA
Captive Power (DG)	320 KVA

Effluent Treatment Plant (EHS)

- The Effluents are collected as :
 - Low TDS (50 KL)
 - High TDS (50 KL)
- The Low TDS effluents are being treated in-house with operational capacity of 5 KLD.
- MEE for treatment of HTDS effluent along with ATFD with ZLD concept for a capacity of 20 KLD.
- Biological treatment plant with capacity of 20KLD.

Quality Control - Analytical Instruments / Equipment

Instrument	Nos
UV spectrometer	Nil
pH meter	02 Nos.
Melting point Apparatus	02 Nos.
Hot air oven	01 Nos.
IR Apparatus	Nil
UV cabinet	01 No.
Vacuum Oven	01 No.
Karl Fischer titrator	01 No.
TDS/ Conductivity meter	01 No.
Muffle furnace	01 No.
Analytical weighing balance	01 NO.
Refrigerator	Nil

**THANK
YOU!**

